

KITCHENSTORI.COM

£3.00



KITCHEN  
STORI





from beginning...

As she replaces the lid on the wok, stir fry simmering away underneath, she hears the doorbell ring in the distance.

She takes a sip of sauvignon blanc and quickly glances round her newly installed kitchen, anticipating the reaction of her friends when they see the gleaming black circular island unit with its concave doors.

“Welcome to paradise!” she cries as they enter, relishing their looks of delight.

“Now, **that** is what I call a kitchen!” her friends exclaim, sitting down to a feast of good food and even better company.

KITCHEN  
STORI |

What's yours?

# Introduction

Whether its cutting-edge contemporary you're seeking, or a heart warming classic, you will find your ideal solution within Kitchen Stori.

Offering huge choice for every kind of customer, the Kitchen Stori range meets all tastes, specifications and budgets, covering everything from doors and handles to internal storage fixtures.

Add to that, the expansion of existing popular ranges, the introduction of new ranges and the new **Natura** palette of natural paints and stains and you have the ultimate collection of tools to build your dream kitchen.

From start to finish  
your kitchen is your story.  
Tell it your way.

KITCHEN  
STORI |





# Contents

**Chapter 1: Matte & Gloss**

Ultra High Gloss: Black & Ebony ..... 6  
Ultra High Gloss: Black & Olivewood ..... 8  
Ultra High Gloss: White & Olivewood ..... 10  
Ultra High Gloss: White ..... 12  
Ultra High Gloss: Vanilla & Olivewood ..... 14  
Ultra High Gloss: Latte & Ebony ..... 16  
Nuvola Bianco ..... 18  
Nuvola Latte ..... 19

**Chapter 2: Natura**

Natura Paints & Stains ..... 22  
Clonmel Oak: Anthracite & Mussel ..... 24  
Clonmel Oak: Wenge & Cream ..... 28  
Clonmel Oak: Cinnamon & Mussel ..... 30  
Clonmel Oak: Light Oak ..... 32  
Clonmel Oak: Black Brown Ferrara & Mussel ..... 34  
Clonmel Oak: Lava & Mussel ..... 36  
Clonmel Oak: Cinnamon ..... 38  
Tavola Oak: Hacienda Black ..... 40  
Tavola Oak: Light Oak ..... 42  
Tavola Oak: Cinnamon ..... 44  
Tavola Oak: Black Brown Ferrara ..... 46  
Tavola Oak: Black Brown Ferrara & Ginger ..... 48

**Chapter 3: Painted**

Paints & Finishes ..... 52  
Madison Ivory & Madison Painted ..... 54  
Dante Painted ..... 56  
Beaufort Painted ..... 59  
Avonlea Painted ..... 60  
Iona Inframe Painted ..... 62  
Alden Ivory Painted ..... 64  
Tara Painted ..... 65

**Chapter 4: Timber**

Avonlea Ash ..... 68  
Avonlea Oak Antiqued ..... 70  
Beaufort Light Oak Shaker ..... 72  
Casa Character Oak ..... 74  
Riga Oak ..... 75  
Clonmel Knotty Oak ..... 76  
Dante Light Oak Antiqued ..... 78  
Dante Light Winchester Oak ..... 79  
Dante Light Oak ..... 80  
Darwin Oak Shaker ..... 82  
Iona Inframe Light Oak ..... 84  
Tara Walnut ..... 86

**Chapter 5: An Alternative Choice**

Malbec Ferrara Oak ..... 90  
Malbec Ivory ..... 92  
Malbec Lissa Oak ..... 94  
Merlot Ivory ..... 96  
Merlot Walnut ..... 98  
Merlot Pippy Oak ..... 100  
Verso Monza Cherry ..... 101  
Verso Monza Ivory ..... 102  
Verso Monza Walnut ..... 104  
Verso Scala Cherry ..... 106  
Verso Scala Ivory ..... 108  
Verso Scala Walnut ..... 110  
Aletta Cherry ..... 112  
Aletta Oak ..... 113

Door Finder ..... 114

**Chapter 6: Finishing Touches**

Handles ..... 120  
Wirework ..... 124  
Storage ..... 125  
Bins ..... 126  
Lighting ..... 127  
Acknowledgements ..... 128

# Matte & Gloss

Allow your mind to run free with the endless possibilities provided by the Matte & Gloss collection. Manufactured in Italy, these cutting-edge ranges, incorporating a sleek polyurethane finish, sexy curves and unique accessories, will result in a kitchen space that is breathtakingly beautiful, as well as practical. A space for true contemporary living.

KITCHEN  
STORI

What's yours?





## Ultra High Gloss *Black & Ebony*

The slick, dramatic look of Ultra Black is given added intensity by the inclusion of high gloss Ebony doors and accessories and also incorporating highly contemporary arc glazed doors. The epitome of style.



Matte & Gloss



**Horizon Handle:**  
Polished Aluminium





Ultra High Gloss  
*Black & Olivewood*

Displaying a pleasing contrast of lights and darks, Ultra Olivewood combined with Ultra Black provides a modern fusion, highlighted by the inclusion of a low-level island unit and arc glazed wall unit doors.



Modern Look Scala Handle:  
Inox Look

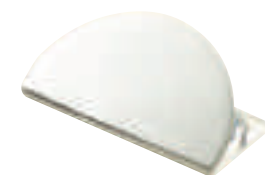


Matte & Gloss



## Ultra High Gloss *White & Olivewood*

The versatility of the Ultra White kitchen is shown here with great effect, when combined with an Ultra Olivewood larder run. The breathtaking central circular island unit and opposing wall unit utilise concave doors that add a unique dimension to this amazing space.



**Soho Rectangular Pull:**  
Chrome





## Ultra High Gloss *White*

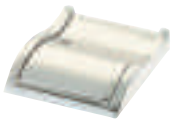
The serene beauty of Ultra's High Gloss White kitchen is displayed here in all its glory, with the use of simple accessories such as chunky end panels to create a space that is both bold and practical. The inclusion of aluminium glazed frames in the overall design provides the perfect contemporary touch.





Ultra High Gloss  
*Vanilla & Olivewood*

A match made in heaven, Ultra's High Gloss Vanilla coupled with the mellow tones of Ultra Olivewood combine with smooth curves and sharp styling to create a dream kitchen that is both spectacular and efficient.



Flush Letterbox Handle:  
Chrome



Flush Letterbox Handle:  
Chrome







## Ultra High Gloss *Latte & Ebony*

The contemporary flavour brought to life in this exciting combination will introduce a real taste of cutting-edge European design into any home. Using both internal and external curved doors to create an undulating effect, the island unit takes centre stage, still allowing the contrasting effects of the Latte and Ebony mix to shine through.



**Ellipse Handle:**  
Inox Look





## Nuvola Bianco

Designed with clean, simple lines, Nuvola creates a fresh, modern look with a difference. The sleek, semi-matt finish is practical as well as unique, cementing Nuvola's place as a highly popular range.



**Angled Knob:**  
Stainless Steel



Matte & Gloss

## Nuvola Latte

Incorporating all the benefits of the Nuvola design with the added warmth of a latte finish, Nuvola Latte exudes simple elegance and style. Curved and bowfronted doors further enhance its appeal.



**Curved D-Handle:**  
Brushed Aluminium





# Natura

nature's colour palette

Change the way you usually think about choosing a kitchen. Dispense with the limitations, forego the predictable trends and embrace the idea of being able to afford premium quality and style.

Natura's unique range of natural paints and stains brings you a brand new world of kitchen design, offering an endless choice of mix and match colour combinations that, when coupled with superior styling, will make your kitchen stand apart from all the rest.

KITCHEN  
STOR |

What's yours?





# Natura

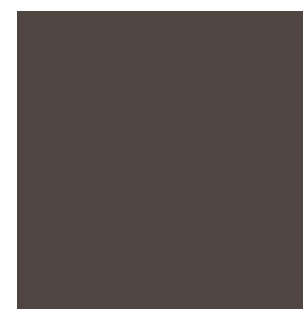
nature's colour palette

**Natura** is a breathtaking new range of paints and stains in earthy shades, extracted straight from Nature's own palette. They inject a classic sophistication into any setting, resulting in a kitchen that is beyond your wildest imagination, yet remaining within your budget.

Created with sheer versatility in mind, these premium finishes can be mixed and matched with complete freedom, resulting in a range of options that will not only breathe new life into your kitchen, they will make it unique and spectacular.



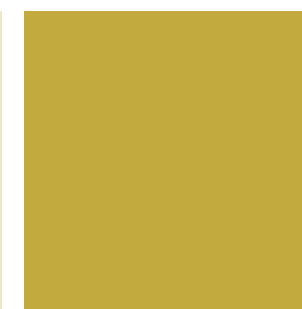
## Natura Paints



Lava



Mussel



Ginger



Graphite



Brown Grey

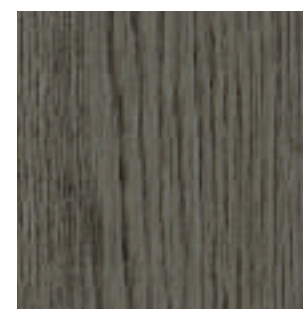


Olive

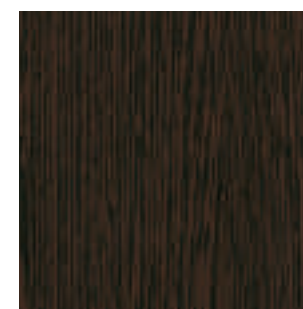


**Please note:** the Tavola Oak and Clonmel Oak kitchens shown in this section can also be painted using any of the paints from the standard Kitchen Stori collection, shown on page 53.

## Natura Stains



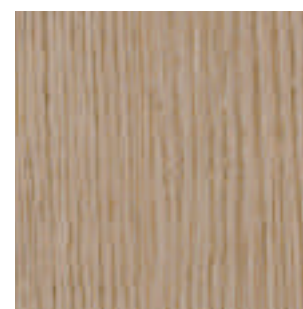
Anthracite



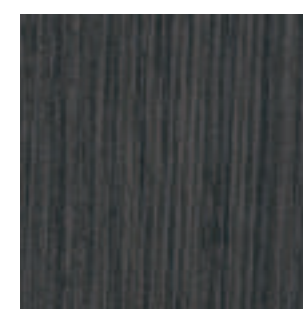
Wenge



Light Oak



Cinnamon



Hacienda Black



Black Brown Ferrara







## Clonmel Oak *Anthracite & Mussel*

The deep charcoal tones of Anthracite are perfectly complemented by the subtle tones of Mussel in this stunningly original colour combination. Chunky end panels are innovatively used throughout to create bookshelves and an inset shelf in the larder run.



**Sonar Handle:**  
Chrome









### Clonmel Oak *Wenge & Cream*

A very welcome addition to the Clonmel range, the rich, opulent tones of Wenge effortlessly intensify the sumptuous grain structure in all its doors and accessories. Perfectly matched here with Cream.





## Clonmel Oak *Cinnamon & Mussel*

This light and airy combination is ideal for those who appreciate the finer things in life. The chunky, shaker-style frame of the Clonmel door provides the perfect canvas for the lavish grain configuration in the Cinnamon stained oak.



**Cordoba Handle:**  
Chrome





## Clonmel Oak *Light Oak*

The familiar warm tones of light oak are enhanced by the addition of inspired accessories such as curved doors, cornice and plinth in this classic and elegant kitchen design. The inclusion of a brown grey wall panel brings an interesting contrast to the mix.



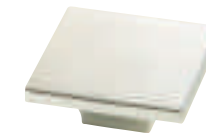
**Bar Handle:**  
Brushed Nickel





## Clonmel Oak *Black Brown Ferrara & Mussel*

Another beautiful example of **Natura** colours coming together in perfect harmony, the exquisite tones of Black Brown Ferrara are brought alive by contrasting Mussel in this luxurious paint and stain combination.



Contempo Handle:  
Chrome







## Clonmel Oak *Lava & Mussel*

This **Natura** Lava & Mussel painted mix is refreshing and lively, with both colours bringing out the best in each other. With the grain still strongly evident through the painted layer, the added feel of timber provides another enticing dimension to this fabulous kitchen.



**Horizon Handle:**  
Polished Aluminium





## Clonmel Oak *Cinnamon*

Cinnamon once again displays its unique qualities in this intriguing design that incorporates a Brown Grey wall panel for added contrast. This time boasting curved doors and accessories, the rich grain structure is shown here at its best.



**Wedge Pull Handle:**  
Brushed Nickel







## Tavola Oak *Hacienda Black*

Tavola's true beauty lies in its simplicity. This elementary slab design is given fresh new life with added curves and a daring horizontal grain. Shown here stained **Natura** Hacienda Black, it makes the quintessential contemporary style statement.



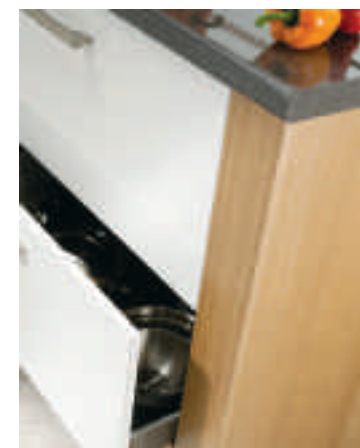
**Bow Handle:**  
Brushed Chrome





## Tavola Oak *Light Oak*

Tavola shows a different side when stained **Natura** Light Oak. Light and dark grain patterns merge to create an aesthetically exciting element, while its versatile quality is displayed beautifully by the inclusion of high gloss white doors.



**Natura**  
nature's colour palette



Arrow Handle:  
Chrome





### **Tavola Oak Cinnamon**

The light, airy feel of Cinnamon is given added depth by the unique horizontal grain of the Tavola design. Curved doors and a modern cornice, seen here incorporated into a floating wall unit, add to the ethereal feel, putting this kitchen in a class of its own.



**Xform Handle:**  
Chrome





## Tavola Oak *Black Brown Ferrara*

Rich and daring, the Tavola Black Brown Ferrara kitchen represents all that is sophisticated about contemporary kitchen design. A streamlined look is achieved by the use of wide drawerfronts and integrated inn handles, which blend seamlessly into the horizontal grain of the door.



**Inn Handle:**  
Chrome





## Tavola Oak

### *Black Brown Ferrara & Ginger*

The fresh, zing of Ginger releases the earthy brown tones of Black Brown Ferrara in this breathtaking and edgy colour combination. Add a modern style larder run housed by chunky end panels and include integrated spring handles to make a truly modern masterpiece.



Spring Handle:  
Inox





# Painted

Whether you are aiming to make a strong statement with bold, daring colours or create a peaceful haven with soft pastels, a painted kitchen is the ideal solution for you.

Influenced by a diverse palette of complementary colours and special finishes, your painted kitchen can epitomise the contemporary, the traditional, or anything in between, representing your own unique taste and personality.

KITCHEN  
STOR |

What's yours?





# Painted

Our carefully selected palette of paint colours can be used in any combination to achieve just the right look for your dream kitchen. Used distinctly as a single colour throughout, or combined on different pieces of freestanding or fitted furniture, you can be sure that your kitchen will be a testament to your true individuality.



## Special Finishes *apply to Avonlea Painted and Dante Painted only*



**Character**  
Knots, cracks and splits are left unfilled and vary in size from door to door to create a kitchen that is full of character and looks like it's always been there.



**Smooth**  
All naturally occurring knots, cracks or splits are filled, leaving behind a smooth, uniform texture. This door does, however, still feature a certain amount of wood grain through the painted surface. Suits both contemporary or traditional setting.



**Distressed**  
All naturally occurring knots, cracks or splits are filled to leave a smooth finish, which is then rubbed down at the hard edges to leave a 'rubbed-through' or 'distressed' look. Creates an 'aged' look and feel.

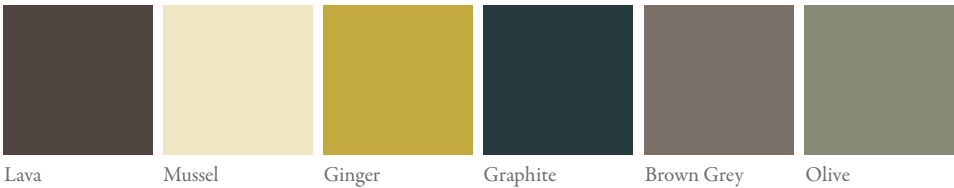


**Character with Distressing**  
Knots, cracks and splits are left unfilled and vary in size from door to door. Hard edges are then rubbed down to leave a 'rubbed-through' or 'distressed' look. This creates an 'aged' look and feel.

## Paints *apply to all painted ranges*



## Also available for all painted ranges



**Natura**  
nature's colour palette

For further information on Natura paint colours, please refer to page 23.

**Please note:** Timber can be susceptible to expansion and shrinkage depending on the environment in which it is installed. This means it can expand when there is an abundance of moisture in the air, particularly in winter or when excess moisture is prevalent in renovated or new builds. Contraction or panel shrinkage may occur in the summer months when the climate is drier. This potential natural movement of the timber can cause any layer of paint, lacquer, varnish etc that has been applied, to move with it and may result in panel shrinkage and hairline cracks along the joints of the door.





**Madison Ivory & Madison Painted**

Effortlessly elegant and undeniably gorgeous, the Madison kitchen makes a sophisticated statement with its simple detailing and pure sense of style. The distinct woodgrain, visible through the painted layer, adds to the feeling of authenticity of this timeless classic.



Shown here:  
Ivory & Natura Olive



Wooden Knob:  
Oak





**Please note:** Dante Painted can have Special Finishes applied. Please see page 53 for details.



## Dante Painted

One of the ranges offering a selection of Special Finishes, a Dante Painted kitchen can easily feel like it's 'always been there' with the addition of a distressed or character finish. Known for its intricate beading and large array of accessories, Dante remains a highly prominent range.



**Bar Knob:**  
Antique Pewter



Shown here:  
Sage Green & White Cotton



## Beaufort Painted

The Beaufort kitchen is given a fresh new look with the application of a painted finish. Whether you opt for a single shade throughout or decide to mix and match, Beaufort will not disappoint, with its versatile design and appeal.



**Cup Handle:**  
Matt Chrome

**Please note:** woodgrain will not be visible through the painted surface of this door

Shown here: Cream







Shown here:  
Light Blue & White Cotton



**Please note:** Avonlea Painted can have Special Finishes applied. Please see page 53 for details.



**Ivory Knob:**  
Ivory

## Avonlea Painted

The charm and elegance of the Avonlea Painted kitchen is evident in every aspect of its design. From the bench pilasters with their detailed turned posts to the elaborate canopy with its intricate beaded front panel, Avonlea boasts quality. Another range that features Special Finishes, Avonlea takes on an 'aged' look and feel with the addition of a character or distressed finish.





Shown here:  
Powder Blue & Cream



## Iona Inframe Painted

The enduring quality of the Iona Inframe Painted kitchen cannot be matched, due to its solid inframe structure. Utterly beautiful, yet strong and practical, Iona is endowed with a large number of accessories, making it a hugely popular range within the Kitchen Stori portfolio.



Wooden Knob:  
Oak







Alden Ivory Painted

This classically styled, PVC overpainted kitchen will deceive with its delicate finish. Intricate beading on all doors and elegant display cabinets hide a hardwearing, robust kitchen, perfectly matched with the use of brass and ivory handles. Available in Ivory only.



Drop Handle:  
Brass & Ivory Crackle

Tara Painted

Tara's clean lines and striking design are clearly defined through a painted finish. Shown here in a Mocha and White Cotton combination, the contrasting colours highlight the simple features of this timeless kitchen. Sharply designed accessories complete the look.



Cup Handle:  
Matt Chrome



Please note: Woodgrain will not be visible through the painted surface of this door.

Shown here:  
Light Blue



Shown here:  
Mocha & White Cotton



# Timber

Nothing quite matches the look and feel of a timber kitchen. Sure to impress with its rich texture and solid structure, it provides a warm welcome for anyone who walks into the room. Whether you choose Oak, with its honey coloured tones and rich grain structure, Walnut, with its sophisticated dark hue or Ash for a lighter, brighter feel, timber spells quality and will never disappoint.

KITCHEN  
STOR |

What's yours?







## Avonlea Ash

The natural, contoured grain coupled with its profiled square panel design makes Avonlea Ash a contemporary dream come true. For those wanting a kitchen that is bright and airy with a feeling of quality, this solid ash door is ideal.



**Modern Curved Handle:**  
Brushed Nickel



**Oval Knob:**  
Satin Nickel



## Avonlea Oak Antiqued

Manufactured from solid French Oak, this traditional style kitchen can't fail to inspire with its subtle antiquing and dignified rural look. With signature pieces such as box pilasters, impressive overmantle and wall dresser, the country kitchen look is complete.



**Bronze Knob:**  
Antique bronze



**Bronze D-Handle:**  
Antique bronze







**Arched Bow Handle:**  
Satin Nickel

## Beaufort Light Oak Shaker

Balancing quality and affordability, the solid oak frame and veneered centre panel of the Beaufort Oak kitchen represents a simple design with timeless appeal. With a variety of accessories such as wine rack, plate rack and georgian frames available, this modern design achieves an inviting traditional twist.







## Casa Character Oak

A rich tale of character and history, the Casa Character Oak sets a scene of country living and craftsmanship. Displaying traditional joinery techniques with its combination of live knots and corner pegs, Casa will warm the heart with its country farmhouse effect.



**Character D-Handle:**  
Rust Effect

## Riga Oak

Simple horizontal lines and minimal detailing make Riga the ideal choice for any modern setting. Crafted from the finest European Oak, its narrow stiles and chunky end panels are exciting features, particularly when partnered with feature frames.



**Bar Handle:**  
Brushed Nickel







## Clonmel Knotty Oak

The bold, chunky design features of Clonmel are a perfect match for the solid European Wild Knotty Oak timber chosen to represent this range. Shaker styling provides a modern feel whilst the addition of simply designed accessories will complete the contemporary look of this incredible kitchen.



**T-Handle:**  
Brushed Nickel







## Dante Light Oak Antiqued

The design potential with Dante is unlimited. Shown here in a stunning combination, Dante Light Oak Antiqued units sit in front of a painted larder run to create a kitchen representing superior taste and styling.



**D-Handle:**  
Antique Pewter



## Dante Light Winchester Oak

Dante's intricate beauty is once again evident, this time in a Light Winchester Oak finish. Combined here with a Cream painted dresser, the central island unit with curved doors is the focus of this truly beautiful kitchen.



**Twister Ball Knob:**  
Antique Pewter







## Dante Light Oak

The introduction of a Light Oak finish to the Dante range has allowed the superb features and fine detailing of this incredibly popular kitchen to shine through. Being extremely versatile, it can be combined with various different painted colours to bring an added dimension to your kitchen design.



**Square Knob & Backplate:**  
Antique Pewter







## Darwin Oak Shaker

The Darwin design displays form and function in perfect harmony. With its thick frame, crafted from solid oak, its quality is clearly evident and when combined with its extensive range of matching accessories can result in a kitchen that is unique and special.



**Cup Handle:**  
Matt Chrome







## Iona Inframe Light Oak

Iona exudes pure luxury with its inframe design crafted from solid European Oak. The incorporation of bowfronted drawers will add that refined touch and the three door larder creates an impressive and functional storage area.



Gothic D-Handle:  
Pewter



Gothic Cup Handle:  
Pewter







## Tara Walnut

Dramatic, exciting and ultra stylish, Tara Walnut is a design with sophistication. Choose from a host of accessories to fulfill the possibilities that this kitchen provides. Floating shelves, lattice framed doors and open frame kits are just a few examples of what Tara has to offer.



**D-Handle:**  
Matt Chrome





# An Alternative Choice

Imagine a kitchen that radiates superior quality and style and is the envy of all your friends. Then, imagine that this same kitchen is robust enough to cope with the wear and tear of daily life, without scratching, peeling or looking tired. If this is your kind of kitchen then we have just the right one for you.

Our superior range of polyurethane vinyl coated kitchens come in an abundance of styles, colours and finishes and are guaranteed to remain looking as good as new for as long as you own them. So, have a look and indulge yourself.

KITCHEN  
STOR |

What's yours?





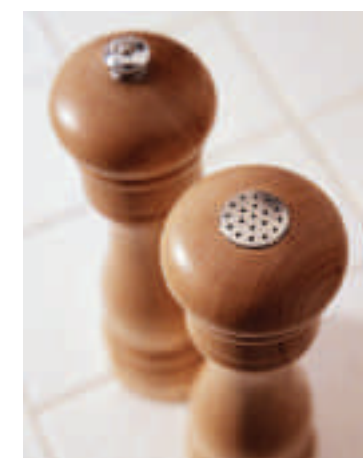


## Malbec Ferrara Oak

The Malbec Ferrara Oak kitchen would not look out of place in the most sophisticated home, such is its aesthetic appeal. Featuring a upmarket, contemporary design, Malbec will impress with its beautiful simplicity and hardwearing exterior, representing incomparable value for money.



**T-Bar Handle:**  
Satin Nickel







## Malbec Ivory

Enjoy the same incredible features of the Malbec design, with a lighter approach. Malbec Ivory presents a classic style that belies its tough nature. Hugely compatible, it will fit right in with any surrounding decor and can be brought to life with a selection of Malbec accessories.



**Splayed D-Handle:**  
Pewter







Malbec Lissa Oak

Yet another finish in the Malbec range, Lissa Oak displays all the characteristics of a real oak finish. With its realistic grain structure and warm, inviting hue, you would swear it was a genuine oak kitchen in your home. Dress it up with a selection of accessories from the Malbec range for added appeal.



T-Bar Handle:  
Matt Aluminium







**T-Handle  
Rounded Twist:**  
Antique Pewter



**T-Bar Handle  
Rounded Twist:**  
Antique Pewter



## Merlot Ivory

Known for its original design features, the Merlot kitchen with its vertical beading and radiused stiles emanates pure elegance and style. Beautiful in an all-Ivory setting, or equally as stunning combined with Merlot Walnut.





## Merlot Walnut

As a contrasting finish, Merlot also features the luxurious tones of walnut. Made for those customers who appreciate fine quality, Merlot Walnut will impress with its life-like quality and hardwearing exterior.



T-Bar Handle:  
Matt Aluminium



## Merlot Pippy Oak

An exciting interpretation on the traditional kitchen, Merlot Pippy Oak boasts a large selection of accessories that will inject individual personality into each and every design, yet still retain its true oak character.



**Cup Handle:**  
Matt Black



## Verso Monza Cherry

Verso's modern face is highlighted by the warm tones of cherry. Incorporating a wealth of special features, including open frame display units and glazed doors, it is a kitchen that doesn't sacrifice style in favour of budget.



**Modern Curved Handle:**  
Brushed Nickel







## Verso Monza Ivory

The soft tone of Ivory lends itself perfectly to the simple lines of the Verso door. The versatility of this design opens up a huge range of options, such as the inclusion of walnut, for a contrasting effect. The simple bench leg system offers a totally different look.



**Pull Handle:**  
Stainless Steel





## Verso Monza Walnut

The warm tones and rich grain of American Tobacco Walnut are a welcome addition to the Verso Monza range. Combining both functionality and aesthetic appeal, Verso's striking features, such as its freestanding units, ensure this range's continuing popularity.



**T-Bar Handle:**  
Matt Aluminium





Verso Scala Cherry

Verso Scala Cherry is a timeless classic with an authentic, traditional feel. Its hardwearing resilience is disguised by its exquisite features and with a wealth of accessories available, can be effortlessly transformed into your dream kitchen.



Ribbed Knob :  
Polished Pewter





## Verso Scala Ivory

The epitome of elegance, Verso Scala Ivory highlights the stunning profiled frame and raised centre panel of this classically styled door. Add feature frames and an overmantle as a gorgeous final touch.



Latch D-Handle:  
Antique Brass





## Verso Scala Walnut

Specifically designed to replicate a handcrafted, solid timber door, Verso Scala Walnut radiates style and grace. The raised panel sculpting preserves the traditional character of this door creating the ambience of a real country kitchen.



**Drop Handle:**  
Antique Pewter



**Tear Drop Handle Rounded Twist:**  
Antique Pewter





Aletta Cherry

The rich qualities of Aletta Cherry are enhanced by its simple, practical design. Hardwearing and modern, this bevelled-edged door can be matched with a selection of accessories to create a kitchen that is both functional and beautiful.



Cylinder Handle:  
Matt Aluminium

Aletta Oak

A timeless design for this laminate kitchen, the Ferrara Oak finish displays elegance and simplicity without compromising on quality. Combined with Aletta's soft, clean lines, it gives you the latest in modern kitchen styling.



Angled D-Handle:  
Aluminium





Door Finder

Chapter 1: Matte & Gloss

Ultra High Gloss



**Black**



**Black plain frame**  
*includes frosted glass with rear plastic beading*



**Black bowfront drawer**



**Black quadrant door**



**Black concave door**



**Black arc door**  
*includes clear glass*



**White**



**Latte**



**Vanilla**



**Olivewood door & drawer**




**Ebony door & drawer**


Every style of door and drawerfront shown above is available in Ultra High Gloss Black, White, Latte and Vanilla.

Ebony and Olivewood High Gloss are available in door & drawer only.


Nuvola




**White**




**White plain frame**  
*includes frosted glass with rear plastic beading*



**White bowfront drawer**



**White quadrant door**




**Latte**


Every style of door and drawerfront shown on the left is available in Nuvola White and Latte.

Chapter 2: Natura Stains


Clonmel



**Anthracite**



**Light Oak plain frame**  
*includes Flemish glass*



**Cinnamon quadrant door**

Every style of door shown on the left is available in all Natura stains.

Tavola



**Black Brown Ferrara**



**Wenge plain frame**  
*includes plain glass*



**Hacienda Black quadrant door**


Every style of door shown on the left is available in all Natura stains.

Chapter 2: Natura Paints

Clonmel



**Mussel**




**Ginger plain frame**  
*includes Flemish glass*




**Lava quadrant door**

Every style of door shown on the left is available in all Natura paint colours as well as all standard paint colours.


Tavola



**Brown Grey**



**Olive plain frame**  
*includes plain glass*




**Graphite quadrant door**


Every style of door shown on the left is available in all Natura paint colours as well as all standard paint colours.

Chapter 3: Painted

Madison Painted



**Ivory**



**Mocha plain frame**  
*includes clear glass*

Alden Ivory Painted



**Light Blue quadrant door**



**Ivory**



**Ivory georgian frame**  
*includes clear glass*

Madison is sold in Ivory as standard but can be overpainted with any of the Natura paint colours or standard paint colours.

Alden is sold in Ivory only.

Avonlea Painted



**Soft Mint character with distressing**

Beaufort Painted



**Sage Green**

Dante Painted



**White Cotton smooth**

Every style of door shown on the left and below is available in all Natura paint colours as well as all standard paint colours.

Dante Painted and Avonlea Painted are also available in a range of Special Finishes (see page 52).

Iona Painted



**Powder Blue**

Tara Painted



**Biscuit**



Door Finder

Chapter 4: Solid Timber

Avonlea



Ash



Oak Antiqued



Oak Antiqued plain frame  
*includes flemish glass*



Oak Antiqued georgian frame  
*includes flemish glass*



Oak Antiqued quadrant door

Every style of door and drawerfront shown on the left is available in either solid ash or oak.

Beaufort Oak Shaker



Oak



Oak plain frame  
*includes clear glass*



Oak georgian feature frame  
*includes clear glass*



Character Oak



Character Oak plain frame  
*no glass included*



Character Oak georgian frame  
*no glass included*

Darwin Oak Shaker



Oak



Oak plain frame  
*includes frosted glass*

Riga Oak



Oak



Oak plain frame  
*includes ribbed glass*

Dante



Light Winchester Oak



Light Oak Antiqued



Light Oak



Light Oak Antiqued georgian frame  
*includes clear glass*



Light Oak quadrant door

Every style of door and drawerfront shown on the left is available in solid Light Winchester Oak, Light Oak Antiqued or Light Oak.

Clonmel Knotty Oak



Knotty Oak



Knotty Oak plain frame  
*includes flemish glass*



Knotty Oak quadrant door



Light Oak door set



Light Oak drawerline set



Light Oak glass frame door set  
*includes clear glass*

Iona Light Oak features a large selection of frames. For details on all frames available, please see Uform's most recent full price list.

Tara Walnut



Walnut door & drawer



Walnut plain frame  
*includes flemish glass*



Walnut frame  
*no glass included*



Walnut feature frame  
*includes flemish glass*



Walnut bowfront door



Walnut quadrant door

Chapter 5: An Alternative Choice

Malbec Ferrara Oak



Ferrara Oak



Ferrara Oak georgian frame  
*includes flemish glass*

Malbec Lissa Oak



Lissa Oak



Lissa Oak georgian frame  
*includes flemish glass*

Malbec Ivory



Ivory



Ivory georgian frame  
*includes flemish glass*

Merlot Pippy Oak



Pippy Oak



Pippy Oak georgian frame  
*includes flemish glass*

Merlot Walnut



Walnut



Walnut georgian frame  
*includes flemish glass*

Merlot Ivory



Ivory



Ivory georgian frame  
*includes flemish glass*

Verso Monza Cherry



Cherry



Cherry plain frame  
*includes clear glass*

Verso Monza Walnut



Walnut



Walnut plain frame  
*includes clear glass*

Verso Monza Ivory



Ivory



Ivory plain frame  
*includes clear glass*

Verso Scala Cherry



Cherry



Cherry plain frame  
*includes clear glass*



Cherry georgian frame  
*includes clear glass*

Verso Scala Walnut



Walnut



Walnut plain frame  
*includes clear glass*



Walnut georgian frame  
*includes clear glass*

Verso Scala Ivory



Ivory



Ivory plain frame  
*includes clear glass*



Ivory georgian frame  
*includes clear glass*

Aletta Oak



Oak



Oak plain frame  
*includes frosted glass with matt nickel trim*

Aletta Cherry



Cherry



Cherry plain frame  
*includes frosted glass with matt nickel trim*



# Finishing Touches

Looking at your brand new, dream kitchen from the outside is a very pleasurable experience you will relish. But how about feeling equally as good looking at the inside? When experiencing the joy of choosing doors and accessories, we sometimes forget that the internal functionality of our kitchen also contributes hugely to our enjoyment of our new space.

Just because it's on the inside doesn't mean it shouldn't be beautiful. Take a look and see...

KITCHEN  
STOR |

What's yours?





Handles

Choose from our extensive range of handles and knobs, available to complement both modern and classical designs.



**Horizon Handle:**  
Polished Aluminium (K1-122)



**Horizon Handle:**  
Polished Aluminium  
(K1-123, K1-124, K1-125, K1-126)



**Cylinder Handle:**  
Aluminium, Matt Anodised (K1-39)



**T-Bar Handle:**  
Matt Aluminium (K1-17)



**Modern D-Handle:**  
Brushed Nickel (K1-24)



**T-Handle:**  
Brushed Nickel (K1-98)



**Round Pull Handle:**  
Brushed Nickel (K1-73, K1-74, K1-75)



**Square Pull Handle:**  
Brushed Nickel (K1-87, K1-88)



**Curved D-Handle:**  
Aluminium (K1-SAVCUR)



**Angled D-Handle:**  
Aluminium (K1-SAVANG)



**Spring Handle:**  
Inox (K1-144)



**Inn Handle:**  
Inox (K1-137)



**Bar Handle:**  
Brushed Nickel (K1-52, K1-53,  
K1-54, K1-55, K1-56)



**Modern Curved Handle:**  
Brushed Nickel (K1-25)



**Arrow Handle:**  
Chrome (K1-142)



**Arrow Handle:**  
Chrome (K1-141)



**Inn Handle:**  
Inox (K1-139)



**Inn Handle:**  
Inox (K1-138)



**Ring Handle:**  
Inox Look (K1-115)



**Ellipse Handle:**  
Inox Look (K1-114)



**Padova Handle:**  
Chrome (K1-133)



**Xform Handle:**  
Chrome (K1-140)



**Inn Handle:**  
Chrome (K1-136)



**Buick Latch Handle:**  
Chrome (K1-130)



**Modern Scala Handle:**  
Inox Look (K1-117, K1-118, K1-119)



**Modern Disco Handle:**  
Inox Look (K1-116)



**Modern Swing Handle:**  
Inox Look (K1-120)



**Modern D-Handle:**  
Satin Nickel (K1-48)



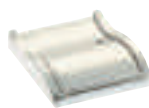
**Cordoba Handle:**  
Chrome (K1-134)



**Soho Knob:**  
Chrome (K1-127)



**Flush Letterbox Handle:**  
Chrome (K1-129)



**Flush Letterbox Handle:**  
Chrome (K1-132)



**Arched Bow Handle:**  
Satin Nickel (K1-27)



**Cup Handle:**  
Satin Nickel (K1-28)



**T-Bar Handle:**  
Satin Nickel (K1-TB01, K1-TB02,  
K1-TB03, K1-TB05, K1-TB06)



**Oval Knob:**  
Satin Nickel (K1-38)



**Contempo Handle:**  
Chrome (K1-121)



**Wooden Chrome Handle:**  
Chrome & Walnut (K1-131)



**Soho Rectangular Pull:**  
Chrome (K1-128)



**Sonar Handle:**  
Chrome (K1-135)



**Ribbon Pull Handle:**  
Satin Nickel (K1-94, K1-95)



**Wedge Pull Handle:**  
Brushed Nickel (K1-91, K1-92)



**Wedge Pull Handle:**  
Brushed Nickel (K1-90)



**Splayed Feet Bar Handle:**  
Brushed Nickel (K1-44)



**Spring Handle:**  
Chrome (K1-143)



**Cup Handle:**  
Matt Chrome (K1-47)



**Modern D-Handle:**  
Matt Chrome (K1-46)



**Centre Bow Handle:**  
Matt Chrome (K1-BOW)





**Bow Handle:**  
Brushed Chrome (K1-86)



**Angled Knob:**  
Stainless Steel (K1-45)



**Pull Handle:**  
Stainless Steel (K1-68)



**T-Handle Twist:**  
Antique Pewter (K1-23)



**Gothic Cup Handle:**  
Pewter (K1-103)



**Die Cast Knob & Backplate:**  
Pewter (K1-BKNOB2-P)



**T-Handle:**  
Pewter (K1-ATHAN-P)



**Latch Handle:**  
Black (K1-LAT-BL)



**Twister Ball Knob:**  
Antique Pewter (K1-57)



**Tear Drop Handle  
Rounded Twist:**  
Antique Pewter (K1-43)



**Twist Drop Handle:**  
Antique Pewter (K1-49)



**T-Bar Handle Rounded Twist:**  
Antique Pewter (K1-90)



**Drawer Handle:**  
Black (K1-LDRAW-BL)



**Knob:**  
Bronze (K1-30)



**Bronze D-Handle:**  
Antique Bronze (K1-29)



**Bow Handle:**  
Antique Brass (K1-61)



**T-Bar Handle Twist:**  
Antique Pewter (K1-22)



**T-Handle Rounded Twist:**  
Antique Pewter (K1-31)



**Rect Pull Handle:**  
Antique Pewter (K1-96)



**Square Knob & Backplate:**  
Antique Pewter (K1-97)



**Latch D-Handle:**  
Antique Brass (K1-59)



**Cage T-Knob:**  
Antique Brass (K1-63)



**Rust Effect Knob:**  
Zinc Alloy (K1-KNOB-ZA)



**Rust Effect D-Handle:**  
Zinc Alloy  
(K1-DHAND-ZA)



**D-Handle:**  
Antique Pewter (K1-51)



**Bar Knob:**  
Antique Pewter (K1-50)



**Latch D- Handle:**  
Antique Pewter (K1-58)



**Bow Handle:**  
Antique Pewter (K1-60)



**Victoria D-Handle:**  
Cast Iron (K1-69)



**Iron Latch Handle:**  
Cast Iron (K1-111)



**T-Handle:**  
Brass & Ivory Crackle  
(K1-7BCGC)



**Drop Handle:**  
Brass & Ivory Crackle  
(K1-3BCGC)



**Ribbed Knob:**  
Polished Pewter (K1-RIBKNOB)



**Ribbed Handle:**  
Polished Pewter (K1-RIBDHAND)



**Cage T-Knob:**  
Pewter (K1-62)



**Cage Drop Knob:**  
Pewter (K1-64)



**Cup Handle:**  
Matt Black (K1-21)



**Knob:**  
Matt Black (K1-20)



**Ivory Crackle Knob:**  
Ivory/Grey Crackle (K1-36)



**Ivory Knob:**  
Ivory (K1-35)



**Cup Handle:**  
Pewter (K1-82)



**Splayed D-Handle:**  
Pewter (K1-99)



**Knob:**  
Pewter (K1-104)



**Gothic D-Handle:**  
Pewter (K1-100, K1-101)



**Timber Knob:**  
Oak (K1-10-126)



**Timber Knob:**  
Oak (K1-113)



**Character D-Handle:**  
Rust Effect (K1-RUST)

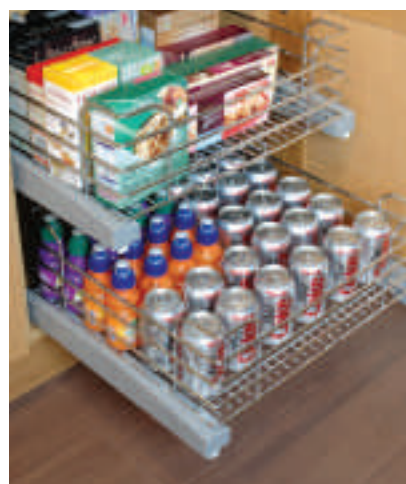


**Character T-Handle:**  
Rust Effect (K1-RUSTTHAND)



## Wirework

It's simple. Wirework just makes life so much easier. It is the ultimate organiser and dispenses with the need to reach to the back of your cupboards, searching endlessly for what you need. Just open your cupboard and all the contents are in full view, instantly.



## Storage

With so many storage options available, you can create your own bespoke space that caters specifically to your kitchen needs. Ranging from internal shelving and vegetable baskets to cutlery inserts and Blum plate organisers, we have every conceivable item to make your kitchen highly organised and functional.



### Blum Creative Storage



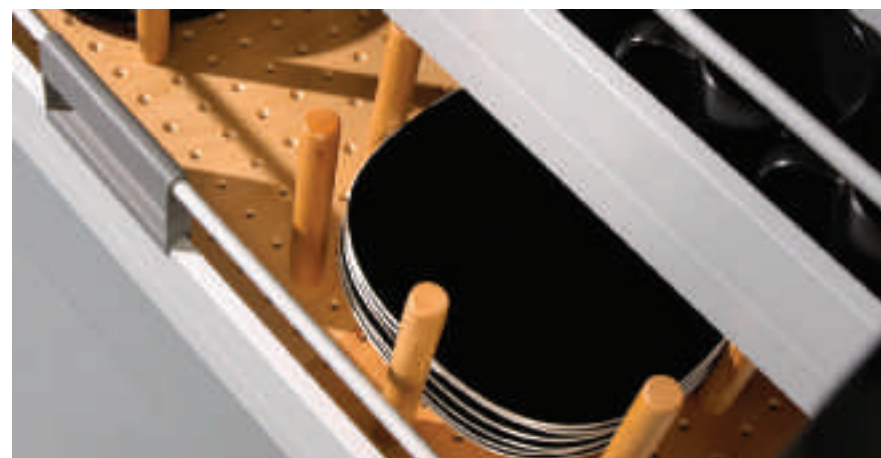
Blum products are guaranteed to create the ideal ergonomic kitchen space. Stylish and practical, they ensure that consumable and non-consumable products are kept in their place, making them easy to locate and access at all times.





### Even more options

Make cutlery look organised, be sure vegetables are right on hand and crockery and pots & pans are easy to access with any of our enticing storage options.



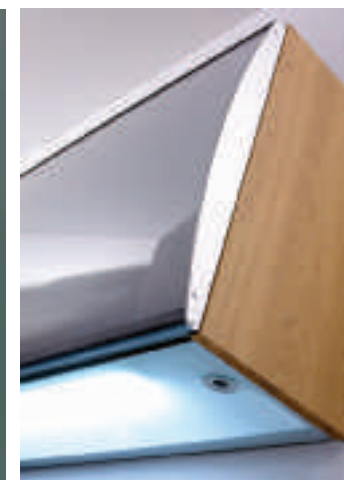
### Bins

Our duty to recycle our waste now means that the days of owning a single bin are long gone. Luckily, there are several options available that make waste disposal and recycling an integral part of our kitchen design, without compromising its aesthetic appeal.



### Lighting

Never underestimate the importance of lighting in a kitchen environment. Whether it is for directly lighting a food preparation or cooking area, creating a focal point on a special feature or is simply for ambient effect, the correct lighting will always enhance and improve your kitchen.





Thank You

The following suppliers generously contributed their products for placement in our kitchen set photography:

HOUSE OF FRASER

House of Fraser's products were used in the Clonmel photographs on pages 24 to 39.

**House of Fraser**  
Victoria Square, Belfast, N. Ireland  
[www.houseoffraser.co.uk](http://www.houseoffraser.co.uk)



Gaggia's products were used in some of the Ultra High Gloss photographs on pages 06 to 17.

**Gaggia**  
Junction One Shopping Outlet, Antrim, N. Ireland  
[www.gaggia.uk.com](http://www.gaggia.uk.com)

Abode Modern Living

Abode Modern Living's products were used in some of the Ultra High Gloss photographs on pages 06 to 17.

**Abode Modern Living**  
12 Broadway Avenue, Ballymena, N. Ireland  
[www.abode-living.com](http://www.abode-living.com)



Equinox's products were used in the Tavola photographs on pages 40 to 49.

**Equinox**  
32 Howard Street, Belfast, N. Ireland  
[www.equinoxshop.com](http://www.equinoxshop.com)



Gilroy Tiles' products were used in the Clonmel and Tavola photographs on pages 24 to 49.

**Gilroy Tiles**  
Grange, Co. Sligo, Ireland  
[www.gilroytiles.com](http://www.gilroytiles.com)



Forbes' products were used in some of the Ultra High Gloss photographs on pages 06 to 17 and some of the Tavola photographs on pages 40 to 49.

**Forbes Furniture Group**  
Station Road Industrial Estate, Magherafelt, N. Ireland  
[www.forbesfurnituregroup.com](http://www.forbesfurnituregroup.com)

**Disclaimer** Although every effort has been made to reproduce the colour of the kitchens and products shown in this brochure, there will be slight variations in actual colours due to printing limitations. We recommend that all colours should be checked in store with your sales advisor prior to purchase.

What's yours?



...to end

“Mmmmm...Mum’s made cherry pie!” he shouts up the stairs, the sweet aroma wafting through the house, enticing the entire family to the kitchen.

Everyone takes a place round the breakfast bar, enjoying a slice of pie, chatting and joking, as Mum looks round at her happy brood. “There’s nothing like a kitchen to bring people together”, she says “it is definitely the heart of the home”.

your kitchen is your story