



Trends 2010: Cocooning, new feel, sophisticated lighting

The shift of social contact into the private living space is called “Cocooning” or “Homing” by trend researchers and sociologists. In view of the current economic uncertainties, this trend from the eighties is once more highly popular. High demands are placed on interior architecture, as the kitchen and living area are increasingly merged. This results in the demand for uniformity of design for the living space. All kitchen products, colours, materials and surfaces must be re-evaluated and checked for their sensuality and emotiveness, i.e. for their “living area suitability”. And so “Cocooning” is used as an umbrella under which the product-trends such as “new feel” or “sophisticated lighting” are collected.

Trend: Retreat into privacy

Google shows 610, 000 entries for “Cocooning” – obviously a topic that arouses interest and moves people. “Cocooning” and “Homing”, the trend for retreating into privacy, into one’s own four walls, has already been documented by Faith Popcorn more than 20 years ago. Over the years it has been experiencing a revival and rejuvenation worldwide, especially in times of economic or political uncertainties. Once again, the economic crisis engenders a retreat by people into the privacy of their home environment. However, there is one difference between the “Cocooning” and “Pupating” of the eighties. Today’s home is viewed not so much as a retreat but as a social living centre with the capacity to be filled with new life. The focal point is joint activities by like minded people – entertainment such as home cinema but above all shared cooking and eating. No more going out to a restaurant, the meeting point is in the privacy of the kitchen. The fact that one saves money in the process is a not an unimportant consequence. Today’s successful Kitchen-Collection is dependent on whether the furniture fits in with people’s personal design ideas and can be integrated into kitchen and living area alike.



Trend: Sensitising the haptic feel

Man's experience gleaned by the five senses. Whereas previously, kitchen furniture appealed foremost to the sense of sight, the eyes, today the tactile perception, the sense of touch, is integrated into designing and planning. The active or passive perception of our environment, the recognition of forms, contours, radii, surface textures, rough or smooth, is an important emotional experience. New materials, particularly the new wood surfaces, but also silk-matt or glossy lacquers provide a sensitive feel and many and pleasant impressions. The combination of different materials, for instance, warm tones of wood with cool stone or smooth against textured surfaces, proves to be varied and stimulating to the sense of touch. For instance, the new programme TOPOS from the LEICHT Collection 2010, with its brushed and stained oak veneered front, offers a fresh, particularly natural and pleasant feel.

Trend: Sophisticated lighting

Lighting affects mood and room climate and often even decides whether one feels comfortable in or rather avoids the room. Thus light is an important aspect and is taken into consideration in increasing measure when planning a kitchen. Particularly the LED-technology (Light Emitting Diode) which creates diverse new possibilities for creative lighting design. Today the LED-technology is so far advanced, that the strength of light is more than enough to be both practical and emotive. At the same time the other benefits such as a long life span with up to 10, 000 hours, or 11.5 years of uninterrupted light, come into play. So LED will normally last the lifetime of a kitchen. Additional advantages are low energy use and low heat output. Also to be considered is the excellent light dispersion with a wide cone that meets all demands of the modern kitchen. Above all, however, the sophisticated form and small size of the LED provide the designer with the best prerequisite for innovative lighting concepts. LEICHT has developed the LED-technology into a continuous lighting concept where the lights are integrated into the carcass. A sophisticated metal housing with an acrylic glass cover was developed and fitted into the cupboard bottom across the total cupboard width almost flush-with-surface. It houses the spots and facilitates antiglare.



New, differentiated colour combination: “atlantic grey” with “acacia”

The appearance of a calm room is the main feature of this straight-lined simple planning which creates a special harmony with the skilful blending of wood and plain-décor fronts and the selective mix of colours and materials. Floor units and an isle from the programme PINTA atlantic grey, a new rather cool grey tone with a medium degree of lightness, form a solid base. The deliberate block appearance of the isle has been achieved through a worktop which matches the colour of the kitchen fronts. The horizontal front division of the handle-less floor units is continuous around the corner providing a harmonious appearance throughout. The friendly yet cool acacia décor from the programme ORLANDO provides a particularly homely addition. The grain match is vertical and combined with the horizontal run of the floor units, creates a vision of suspense. The floor units, which cut into the tall unit run, provide a rather nice transition. Oven and dishwasher are hidden from sight; the door of the tall unit slides sideways alongside the carcass giving unhindered access to the interior during kitchen work. Tall and wall units have been designed without lining shelves, thus contributing to the overall mood of calm in the appearance of the kitchen.



This kitchen stands in the centre of the living room. A freestanding wall provides the division between kitchen and living area and sets an architectural highlight. The fitted wall and floor units are accessible from both sides. The space between remains open, the overall view intact. The new performance-strong LED lights have been integrated into the lining shelves of the wall units across the whole cupboard width. They offer a homely yet strong light, similar to halogen spots. LED lighting saves energy and on the whole will last the lifetime of a kitchen. The wide dispersing spots are located in a sophisticated metal housing with an acrylic glass cover and are inserted into the lining shelf and therefore almost surface flush. The housing can be easily accessed to enable an exchange in the event of a possible LED defect.

The worktop has an overhang at the rear, thus providing an additional bar seat area in the living room. The isle also has a solid bar top in the front material, set on top of the worktop. The handle-less fronts of the isle extend downwards to the floor, concealing the typical kitchen plinth.

The wood tone of the interior harmonises with the light front décor. All inner pullouts have decorative glass sides and an automatic opening mechanism. There is also a new waste material system, available for all sink and waste units. The high quality plastic containers are integrated in a lacquered metal frame, seated on the cupboard frame, providing an elegant closed appearance.



Opposites attract: high gloss acrylic front and natural wood

An open, flexible Paneel-cupboard wall forms the focal point and integrates perfectly within the kitchen. From it grows, seemingly suspended – the solid kitchen block. Living and working are closely related, the kitchen blends in seamlessly and almost imperceptibly with the living area. The wall design system PANEEL 40 meets all requirements with its integrated bench seat, shelves, lighting panels with atmospheric room lighting and shallow wall units with sliding doors, visually providing the perfect complement for the room. The directly adjoining tall units contain the necessary kitchen functions: refrigerating and baking. They do not have an upper panel cover and thus appear lighter and more open. The kitchen block extends the kitchen into the room, dividing and connecting at the same time. It is “entwined” with the bench seat in order to generally loosen the appearance.

The combination of two new LEICHT programmes emphasises the opportunity for architectonic planning. The glossy acrylic fronts of the new LUNA kitchen were used for the cupboard wall. They are particularly enhanced by their strong brilliance of the radiant white tone and also through their exceptional surface quality. Apart from “frosty white”, the new acrylic front is also available in “magnolia” and “black”. For effect, the kitchen block from the new programme TOPOS provides not only a visual but also haptic contrast. The stained and brushed oak veneer front appears particularly lively through its distinc-



tive graining and natural unevenness, and feels like that to the touch. The colour “texture-rich barrique” is distinguished through a shade of grey that is reminiscent of old weather-worn wood, through its striking graining and the noticeably visible pore. Thus they form a particularly beautiful and strong contrast to the brilliant white fronts of the LUNA.

The side panels and the sophisticated worktop of quartz material in a new graphite colour, with slight glimmer effects, merge with the oak fronts. The TOPOS is also available in “texture-rich barrique” in a lighter natural tone, always available with matching surround accessories.



Free standing or built-in: two panel shelf units in dialogue:

The newly conceived LEICHT Panel shelf unit is very versatile, with or without rear wall, free standing or against the wall – a typical element that unfolds its room-arranging and room-dividing function in the living area as well as in the kitchen. In LARGO-FG/AVANCE-LG two panel shelf units stand opposite each other. One is free standing in the room, tied to the isle, the other is integrated in the tall unit run. The wall shelf, the AVANCE-LG floor units together with the closed fronts in the free standing shelf unit, are lacquered in a soft double-chocolate colour, thus forming an unobtrusively elegant contrast to the “magnolia” kitchen fronts. The various kitchen elements stand in dialogue with each other and the isle bonds with the cupboard run. Both kitchen programmes are high gloss and appear particularly light and friendly through the fine colour grading.

The two wall shelf units are laterally staggered. One isle shelf has been integrated into one half of the units, the other is free standing without a back wall, giving the room the appearance of openness and transparency. Positioned approximately at face level, closed cupboard fronts with touch opening mechanism, stretch along the whole width of the room divider. They are accessible from both sides. This results in the horizontal lines of the floor units being continued on a higher level in the room divider. The panel shelf unit within the tall unit run opposite is mirrored to the other side and thus moved to the end of the tall unit run. The colour change in the tall unit side panel gives the impression



of having been inserted. The dishwasher is integrated in a tall unit with slide-away doors. The front slides sideways and is pushed in at right angles, alongside the carcass. Appliance and storage space are easily accessible at any time.

The isle is self-supporting along a width of 2 metres, stabilised by a support beam and at the free hanging end by an elegant frame. In the AVANCE programme, the griprails, here lacquered in the front colour, continue around the corner, giving the kitchenblock an overall enclosed appearance.



A typical planning concept: an “L” shaped cupboard arrangement

A discernible interior architectonic concept is a characteristic of a well planned kitchen. Certain form elements and clean lines are therefore clearly repeated. The artistic design concept of an inverted “L” shape, forms the basis of the ORLANDO/CLASSIC-FS . At the isle it is revealed through the introduction of differing cupboard depths. Whereas the white, silk-matt lacquered fronts of the CLASSIC-FS project forward, the black ORLANDO fronts below are recessed, giving the appearance of a classic “L” shape. The recess provides legroom for bar stools. The “L” section of the tall units is formed with illuminated glass cupboards, appliances and black lacquered cupboard fronts. A wall section completes the vertical finish of the isle.

A clear, cold, blue tinged white is the colour statement of the new “arctic” tone. It is available in the “Classic” programme with either a silk-matt or a finely textured lacquered surface. This special white has a particularly beautiful effect when used on its own in minimalist modern designs. Shown here in combination with black in an environment of natural tones, it demonstrates that this cool white can appear very homely.



The fronts are handle-less except for the two white tall units. The new glass cupboards with glass shelves, suitable for all programmes, have been fitted with the one- touch-mechanism. On the inside the transparent glass fronts are offset with straight lined narrow metal frames finished in stainless steel look. In combination with closed cupboards and appliances, a calm and 2-dimensional wall arrangement can be achieved.

The narrow white side panels and the white worktop give the isle arrangement an appearance of lightness.



Symmetrical asymmetry: inserted cupboards

Each symmetry becomes more interesting when broken. Here an inserted and side-staggered cupboard cube breaks the otherwise ordered symmetrical room planning. It opens the free standing isle block towards the living room, operating at the same time as a bar top. When planning, it is essential that the overhang is no more than 60 cm otherwise frames have to be used. The inserted cube protrudes from the worktop, thus effecting a visual divide between work- and living-area. The fact that it covers the outlet of the tap is an additional advantage as the sink-centre cannot be seen from the living room.

The “minimal” contrast between the light oak wood of the new TOPOS and the silk-matt, white lacquered, CLASSIC-FS fronts creates a particularly friendly and soft room atmosphere. The light colour of the surround compounds this effect. Worktop and side panels on the isle are uniformly white. The side panels and upper covering of the inserted cupboards match the front colour, i.e. light oak wood. The appearance of the isle is that of a closed cube through the inserted, seemingly entwined, cupboards.



The four closed cupboards at sideboard height are symmetrically enclosed by the custom-made wall shelf unit. With this system, side panels, floor and rear walls can be ordered separately. The shelf unit rear walls are detailed in “textured oak”, matching the front colour. This way they correspond with the inserted cupboard element at the isle, clearly displaying a continuous planning concept.

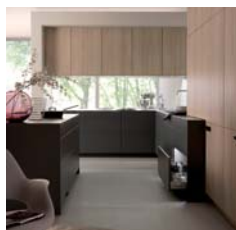
All fronts facing the living room have handle-less doors and interior pullouts. The uniform front arrangement creates a harmonious picture, emphasising the calm room atmosphere. To give the planner this possibility, LEICHT has extended the Collection by fitting all one-door cupboards including tall units, with the touch-mechanism. In the work area between cooking- and wet-centre, the floor units have pullouts. Accordingly, all important appliances and tools are neatly laid out and easily accessible.

To visually improve and integrate the isle even better into the living room, LEICHT has extended the cupboard doors to the floor. The normal plinth has been concealed. The whole storage space, including the space in and below the inserted cupboards, is fully accessible from the living room.

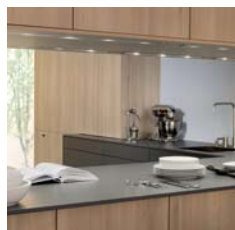
PINTA | ORLANDO



240-219-A1-137-340-j09



240-219-A2-137-340-j09



240-219-D1-137-340-j09



240-219-D2-137-340-j09



240-219-D3-137-340-j09



240-219-D4-137-340-j09



240-219-D5-137-340-j09



240-219-D6-137-340-j09



240-219-M-137-340-j09

LUNA | TOPOS



249-269-A1-120-223-j09



249-269-A2-120-223-j09



249-269-D1-120-223-j09



249-269-D2-120-223-j09



249-269-D3-120-223-j09



249-269-D4-120-223-j09



249-269-D5-120-223-j09



249-269-D6-120-223-j09



249-269-D7-120-223-j09



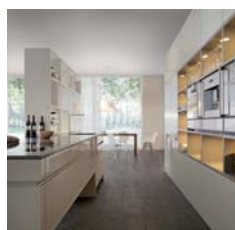
249-269-G-120-223-j09



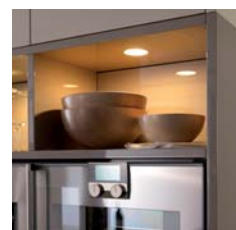
249-269-M-120-223-j09



LARGO-FG |
LARGO-LG |
AVANCE-LG



288-405-A1-032-NCS-j09



288-405-D1-032-NCS-j09



288-405-D2-032-NCS-j09



288-405-D3-032-NCS-j09



288-405-D4-032-NCS-j09



288-405-D5-032-NCS-j09



288-405-D6-032-NCS-j09



288-405-D7-032-NCS-j09



288-405-D8-032-NCS-j09



288-405-M-032-NCS-j09



219-213-A1-257-100-j09



219-213-D1-257-100-j09



219-213-D2-257-100-j09



219-213-D3-257-100-j09



219-213-D4-257-100-j09



219-213-D5-257-100-j09



219-213-D6-257-100-j09



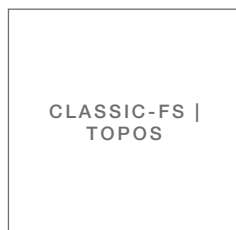
219-213-D7-257-100-j09



219-213-D8-257-100-j09



219-213-M-257-100-j09



269-213-A1-222-120-j09



269-213-A2-222-120-j09



269-213-D1-222-120-j09



269-213-D2-222-120-j09



269-213-D3-222-120-j09



269-213-D4-222-120-j09



269-213-D5-222-120-j09



269-213-D6-222-120-j09



269-213-M-222-120-j09